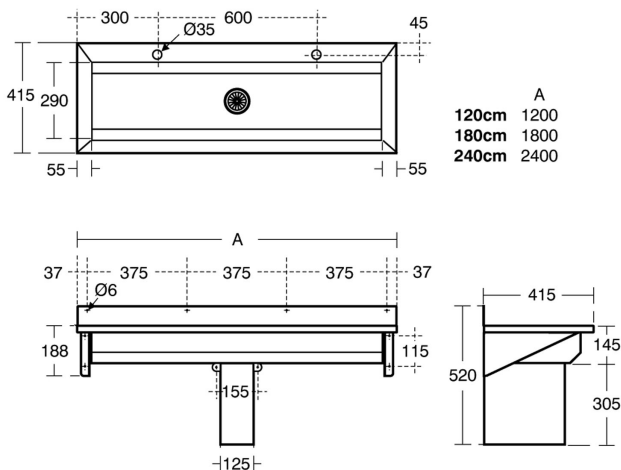




This image is for illustrative purposes only



Calder Washing Trough, 240cm Central Outlet Domed 2in Waste Tapholes for 4 mixers

Illustrated

- S2826** Calder stainless steel washing trough 240cm long, 4 taphole positions, central outlet with 2" domed waste
- B8861** Avon 21 washbasin mixer 1 hole, self closing push button, variable temperature with copper tube inlets
- A5900** TMV Thermostatic mixing valve 15mm

Configuration options

- A4169** Contour 21 washbasin mixer thermostatic 1 hole, single sequential long lever, copper tails
- B8260** Piccolo 21 washbasin 1 taphole mixer, fitted 5 litres per minute aerated flow regulator, optional flow straightener, EasyFix, temperature limit stop, flexible tails no pop up waste

Material

Stainless Steel

Weights

S2826	22.40KG
B8861	2.45KG
A5900	0.60KG

Colours

Stainless Steel finish (MY)

Standards

Stainless steel sheet to BS EN 10088:Part 2:2005

Special Notes

Consideration should be given to safe hot water delivery and the use of an appropriate temperature reduction device see A5900AA

Frequently used applications

Education	Factory
Public Building	Sports and Leisure
Vandal Risk	

Accreditations

WRAS
Water Label

Armitage
Shanks

Email: info@idealspec.co.uk
Tel: 0870 122 8822
Fax: 0870 122 8282
Web: www.idealspec.co.uk

Ideal Standard (UK) Ltd. makes every effort to ensure that the information provided on its website is accurate. However, we cannot guarantee this, and accept no liability for any information or advice given via its website.

Powered by
Ideal Spec

Date created: 06/09/2016