

Doc M Contour 21 Close Coupled Pack LH

ILLUSTRATED

S6966 Doc M Contour 21 close coupled left hand corner pack, WC pan, water saving delay fill cistern with spatula lever, basin, grab rails, hinged support rail with toilet roll holder, seat no cover with retaining buffers, copper tails on TMV3 mixer tap


ILLUSTRATED PRODUCT DETAILS


Weights
S6966 69.65 KG

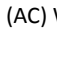
Finishes
S6966  White (AC)


Materials
S6966 Mixed Material

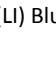
FINISH OPTIONS


(MY) Stainless Steel finish


(LJ) Grey

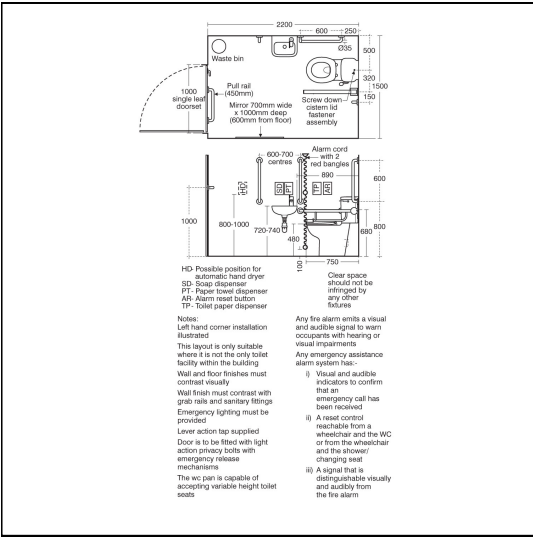

(AC) White


(RN) Charcoal


(LI) Blue

Standards
Vitrous china to BS 3402

Special Notes
Doc M packs are available both right and left hand corner arrangement, illustrated is left hand arrangement. Supplied with layout drawings, detailing the fixing positions necessary for Doc M compliance



ACCREDITATIONS



FEATURES

