

ILLUSTRATED

S6959 Doc M Contour 21 peninsular care pack close coupled WC pan, water saving delay fill cistern with spatula lever, grab rails, 2 hinged arm support, toilet roll holder, seat no cover with retaining buffers, larger washbasin, copper tails on TMV3 mixer tap

Weights

S6959 69.65 KG

Materials

S6959 Vitreous China

Finishes

S6959 White (AC)



Capacity

S6959 5 litres

Flow rates

S6959 4.7 Litres per minute @ 3 bar pressure

FINISH OPTIONS



(MY) Stainless Steel
finish



(AC) White



(LI) Blue



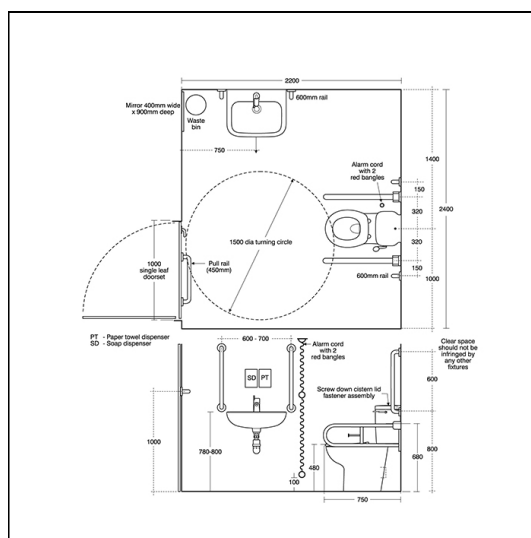
(RN) Charcoal

Standards

Vitreous china to BS 3402

Special Notes

Peninsular care packs require local authority approval as a public facility and should not be the only Doc M facility in a building



ACCREDITATIONS



FEATURES

