

## Leven Back Inlet Slophopper In Stainless Steel

### ILLUSTRATED

<b>S6567</b>	(DU) Leven slop hopper stainless steel, back inlet
<b>S4663</b>	Flushpipe 850 x 35mm diameter for slop hopper
<b>B1684</b>	Nimbus 21 bib tap extension 1/2" x 100mm pair
<b>S3626</b>	Conceala 2 cistern 6 litre single flush syphon high level side supply and internal overflow, lever with chain
<b>S3584</b>	P trap outlet, plastic for slop hoppers
<b>S8270</b>	(TB H1) Markwik 1/2" bib taps
<b>B1686</b>	Nimbus 21 concealed bib tap wall mountself centralising installation pair

### OPTIONS

<b>S4385</b>	High Level Lever Assembly For Conceala 1 Cistern
<b>S9281</b>	Leg 900mm stainless steel to floor (2 required)
<b>S3632</b>	Conceala 1 cistern 9 litre single flush syphon, alternative height plastic flushbends side supply and internal overflow, no lever

### ILLUSTRATED PRODUCT DETAILS








#### Weights

<b>S6567</b>	12.50 KG
<b>S4663</b>	2.00 KG
<b>S3626</b>	3.00 KG
<b>S3584</b>	0.26 KG
<b>S8270</b>	1.65 KG

#### Materials

<b>S6567</b>	Stainless Steel
<b>S4663</b>	Plastic
<b>B1684</b>	Chrome Plated Brass
<b>S3626</b>	Plastic
<b>S3584</b>	Plastic
<b>S8270</b>	Chrome Plated Brass
<b>B1686</b>	Chrome Plated Brass

#### Finishes

<b>S6567</b>	 Stainless Steel finish (MY)
<b>S4663</b>	 Neutral / No Finish (67)
<b>B1684</b>	 Chrome (AA)
<b>S3626</b>	 Neutral / No Finish (67)
<b>S3584</b>	 White (01)
<b>S8270</b>	 Chrome (AA)
<b>B1686</b>	 Chrome (AA)

#### Capacity

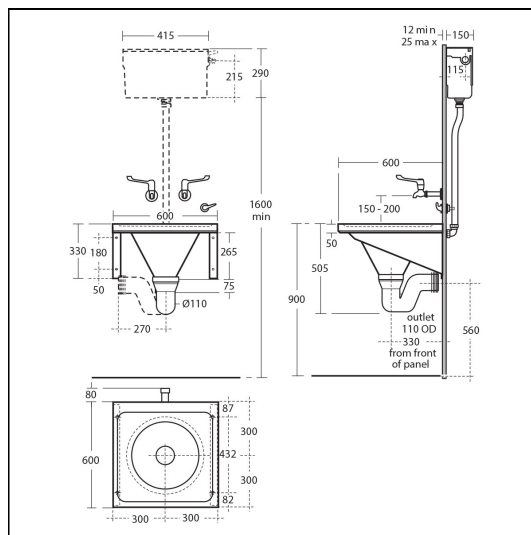
<b>S3626</b>	6.0 litres
--------------	------------

#### Standards

Manufactured from 1.2mm 1.4301 (304) Stainless Steel sheet, conforms to BS EN 10088: Part 2: 2005

#### Special Notes

HTM64 does not cover for the provision of leg supports to floor



### FEATURES

