

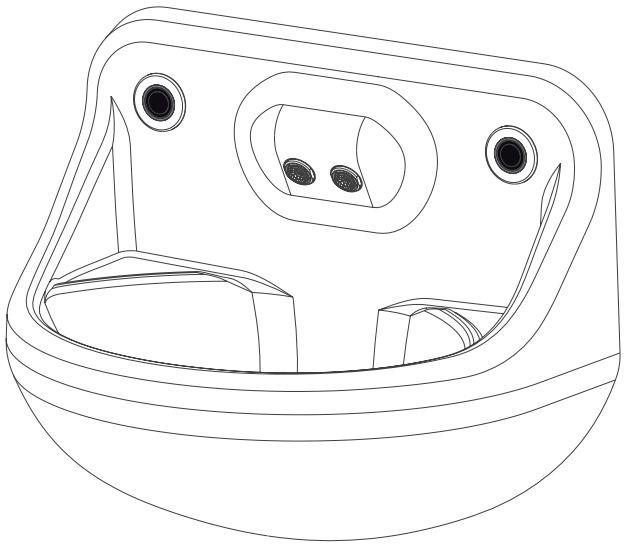
\*Not supplied

Armitage  
Shanks

# Sentry21 Safe Ensuite Integrated Basin

## Installation instructions

S330001  
S330101  
S330601  
S330701  
S330801  
S330901  
S331001  
S331101  
S331201  
S331301



Armitage  
Shanks

### Step 1 : Safety first

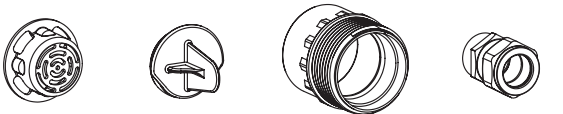
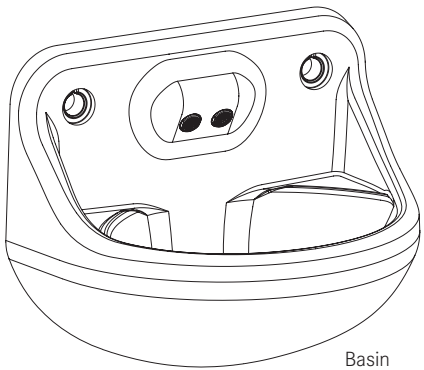
These instructions relate to the use of the Intergrated Basin and Backplate only, any external or 'add-on' parts will be supplied with separate instructions.

It is recommended that the electrical part of the installation be carried out by a qualified electrician in accordance with the latest electrical regulations. It is also recommended that any plumbing is carried out by a qualified plumber.

**IMPORTANT :** Please read these instructions carefully and follow each stage in order!



### Step 2 : Parts

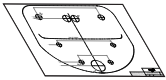


Waste grid (x1)    Waste bung (x1)    1 1/4" plastic male iron (x1)    Compression male iron (x2)

The fixing kit supplied is suitable for fixing to IPS panels up to 25mm thick, for brick or concrete walls please see options below:

VR01-006    Fixing kit for 100mm walls  
VR01-007    Fixing kit for 150mm walls  
VR01-008    Fixing kit for 250mm walls

Each kit includes:  
4 x 10mm Steel threads  
2 x 1/2" BSP Brass threads (for sensors)



Drilling template



Square washer (x4)



M10 hex nut (x4)



M10 A11 thread (x4)



Instructions

## Step 3 : Wall Preparation & Drilling Template

### Locating correct position

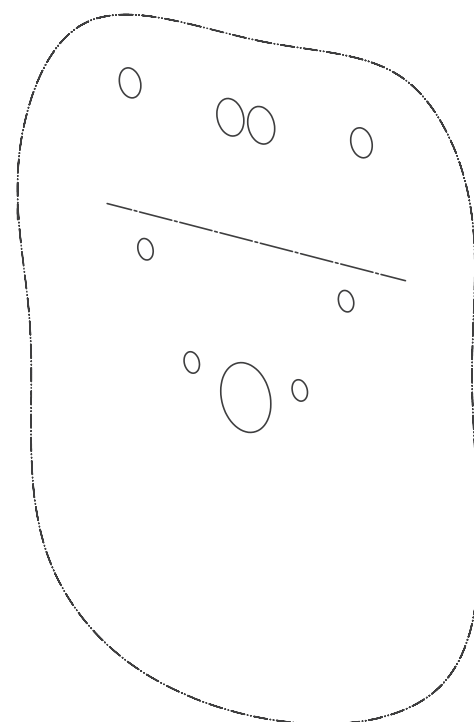
#### Please note - Maximum cable runs

Routing of cables back to the control box should be planned at this stage.

Temporarily fix the drilling template at the correct height using masking tape.

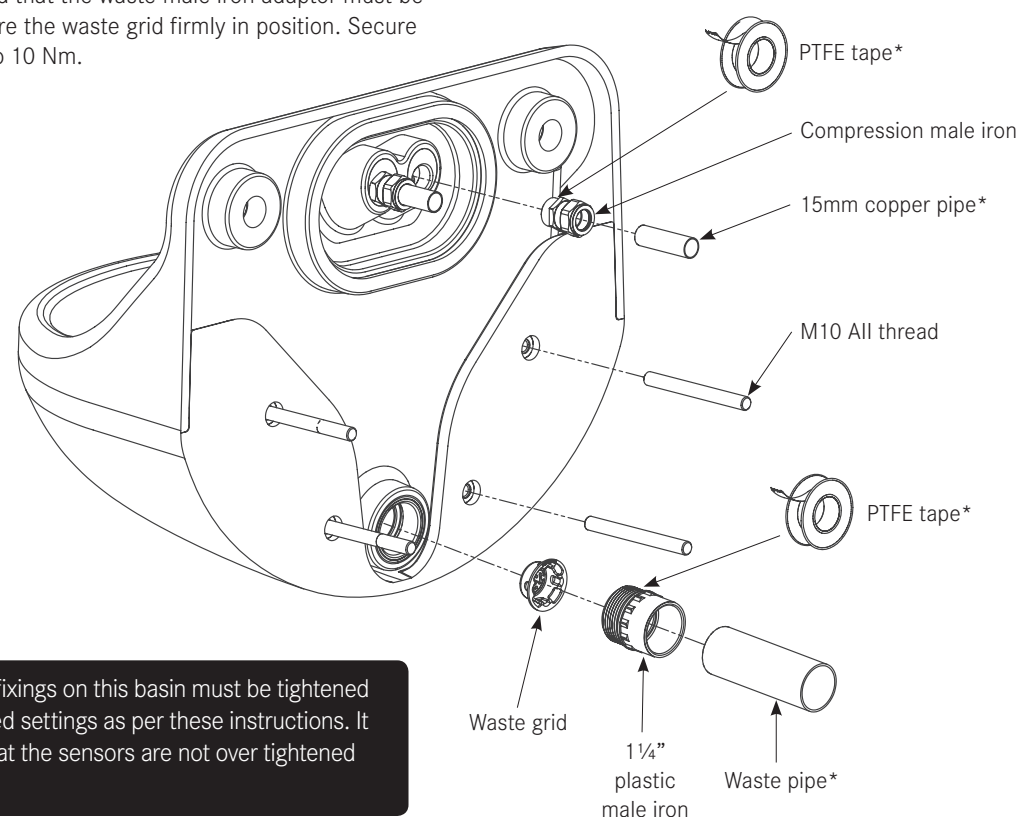
**NOTE :** As a guide, UK guidelines recommend a distance from the rim of the basin to the floor of between 780 and 800mm (standard use) / 720 and 740mm (disabled use). Use rim line on the drilling template.

Drill through the marked areas on the template. Remove the template, then secure the basin with the fixings as shown under step.4 and 5.



## Step 4 : Fittings Installation

Install fittings as shown, ensuring the M10 threads are screwed fully into the basin, and that the waste male iron adaptor must be fully tightened to secure the waste grid firmly in position. Secure basin with M10 nuts to 10 Nm.

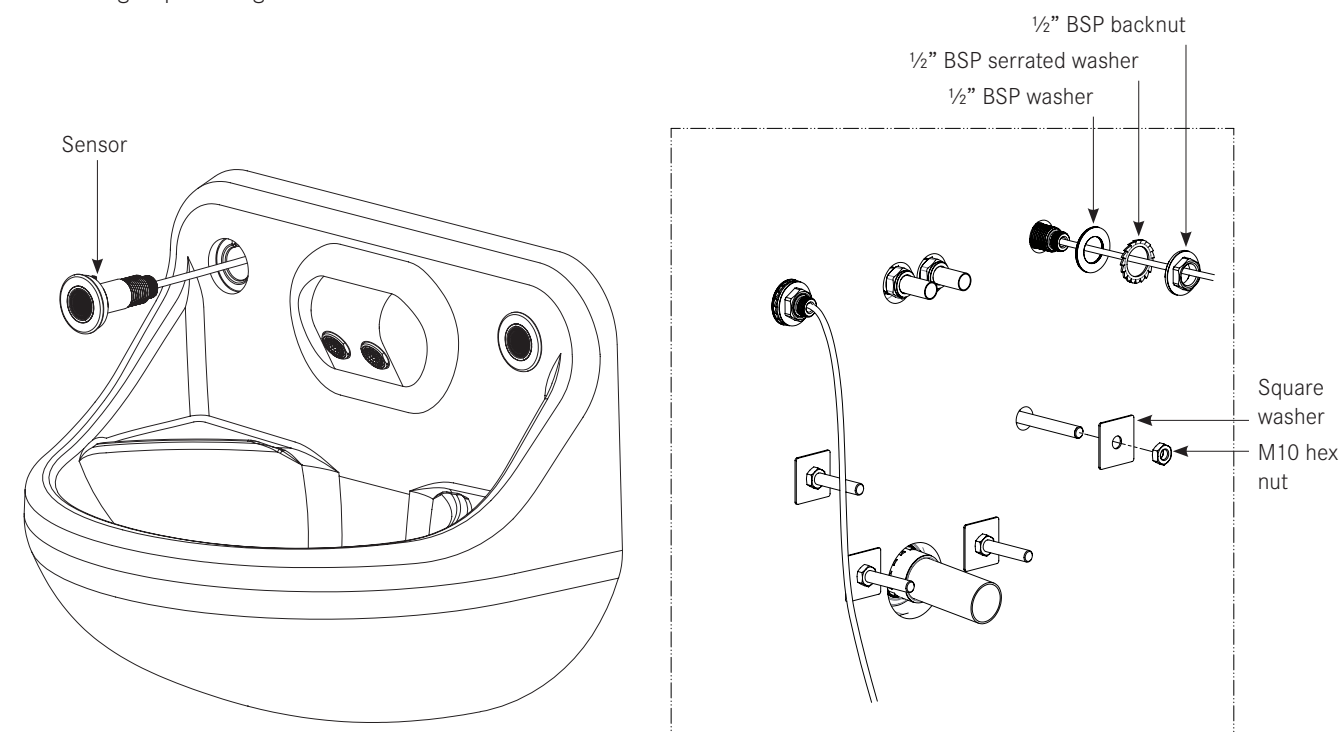


**IMPORTANT :** The fixings on this basin must be tightened to the recommended settings as per these instructions. It is also important that the sensors are not over tightened during step.5.

\*Not supplied

## Step 5 : Sensor Installation

To fit sensor securely, tighten the 1/2" BSP backnut by hand as far as possible. Using a spanner tighten the backnut a further 1/2 turn.



## Step 6 : Cleaning

This product should be cleaned daily with warm soapy water, then rinsed with cold water. If desired, this product can be dried using a soft non-abrasive cloth.

The gel coat has a high gloss surface. Abrasive cleaners and scouring powders should be avoided, as long term, these products will scratch and damage the gel coat.

Non abrasive cleaning agents can be used, however, we recommend testing the product first in an inconspicuous area to ensure compatibility- checking there is no deterioration in the surface quality. Any cleaning products should be used as per the manufacturers instructions.

If bleach is used to sanitise the product, it is important to rinse it away with a copious amount of water. Bleach should not be left in contact with the product for a long period of time.

Care should be taken to avoid contact with the following chemicals as they can damage the gel coat; paint strippers, strong disinfectants, alcohol, aftershave, perfumes, nail varnishes and their removers.

If in doubt please contact us direct.

## Warranty & Support

### Warranty

The Safe Ensuite Integrated Basin is guarenteed for 2 years from purchase against defective material and assembly.

### Support

For customer care and support please contact us:

System21CustCare@ArmitageShanks.co.uk

+44 (0)844 5436170

Fax +44 (0)844 5436171

### Head Office

Armitage Shanks  
Armitage  
Near Rugeley  
Staffordshire  
WS15 4BT  
UK

+44 (0)870 122 8822

*Armitage  
Shanks*