

Concept Cube 50cm Short Proj S/C Washbasin, 2 Taphole

ILLUSTRATED

E7797	Concept Cube 50cm short projection semi countertop washbasin, glazed back edge, 2 tapholes with overflow
B9925	Concept washbasin pillar taps
E6760	Waste 1½" brass waste with chain and plug, 80mm slotted tail, bolt stay
S8920	Trap 1½" plastic resealing bottle, 75mm seal, multi-purpose outlet

OPTIONS

B1146	Calista basin pillar taps 1/2" (pair)
BC184	Ceraline basin pillar taps

ILLUSTRATED PRODUCT DETAILS





Weights

E7797	12.73 KG
B9925	1.63 KG
E6760	0.28 KG
S8920	2.00 KG

Materials

E7797	Fine Fireclay
B9925	Chrome Plated Brass
E6760	Chrome Plated Metal
S8920	Plastic

Finishes

E7797	 White (01)
B9925	 Chrome (AA)
E6760	 Chrome (AA)
S8920	 Neutral / No Finish (67)

Flow rates

B9925	5 Litres per minute @ 3 bar pressure
--------------	--------------------------------------

Designer

Robin Levien, RDI

FINISH OPTIONS



(AZ) Light Gold Finish

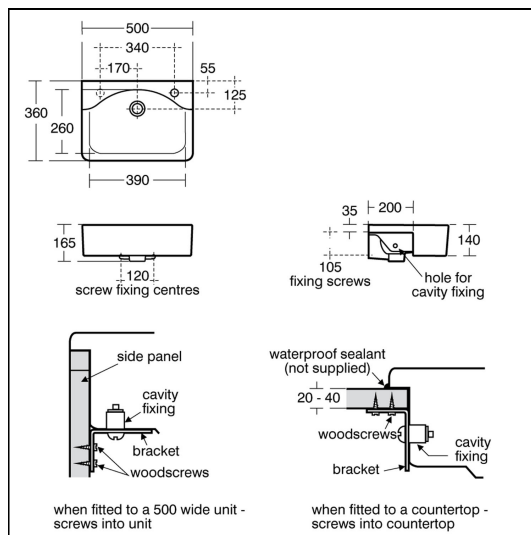
(AA) Chrome

Standards

Washbasin to BS EN 14688 & BS EN 31

Special Notes

Washbasin fixed to countertop with securing clips provided. Joint sealed with waterproof sealant (not supplied). Basin designed to leave a 10mm gap at rear to tile down onto worktop. We only recommend the use of our 210mm units with this basin.



FEATURES

