

Doc M Standard Pack RH

ILLUSTRATED

**S0690** Doc M Standard low level right hand corner pack, WC with spacer box low level cistern, grab rails, hinged support rail with toilet roll holder, seat no cover with retaining buffers

ILLUSTRATED PRODUCT DETAILS

Weights

**S0690** 70.00 KG

Materials

**S0690** Mixed Material

Finishes

**S0690**  White (AC)

Capacity

**S0690** 6.0 litres

Flow rates

**S0690** 4 Litres per minute @ 3 bar pressure

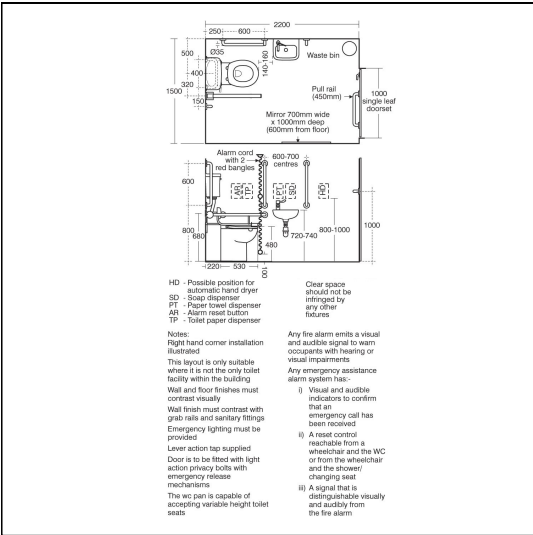
FINISH OPTIONS

  
(AC) White

  
(LI) Blue

Special Notes

Doc M packs are available both right and left hand corner arrangement, illustrated is right hand arrangement. Supplied with layout drawings, detailing the fixing positions necessary for Doc M compliance.  
White:Ral=9016, LRV=87  
Blue:Ral=5011, LRV=6  
Red:Ral=3020, LRV=12  
Grey:Ral=7005, LRV=19  
Charcoal:Ral=7016, LRV=8



ACCREDITATIONS



FEATURES

